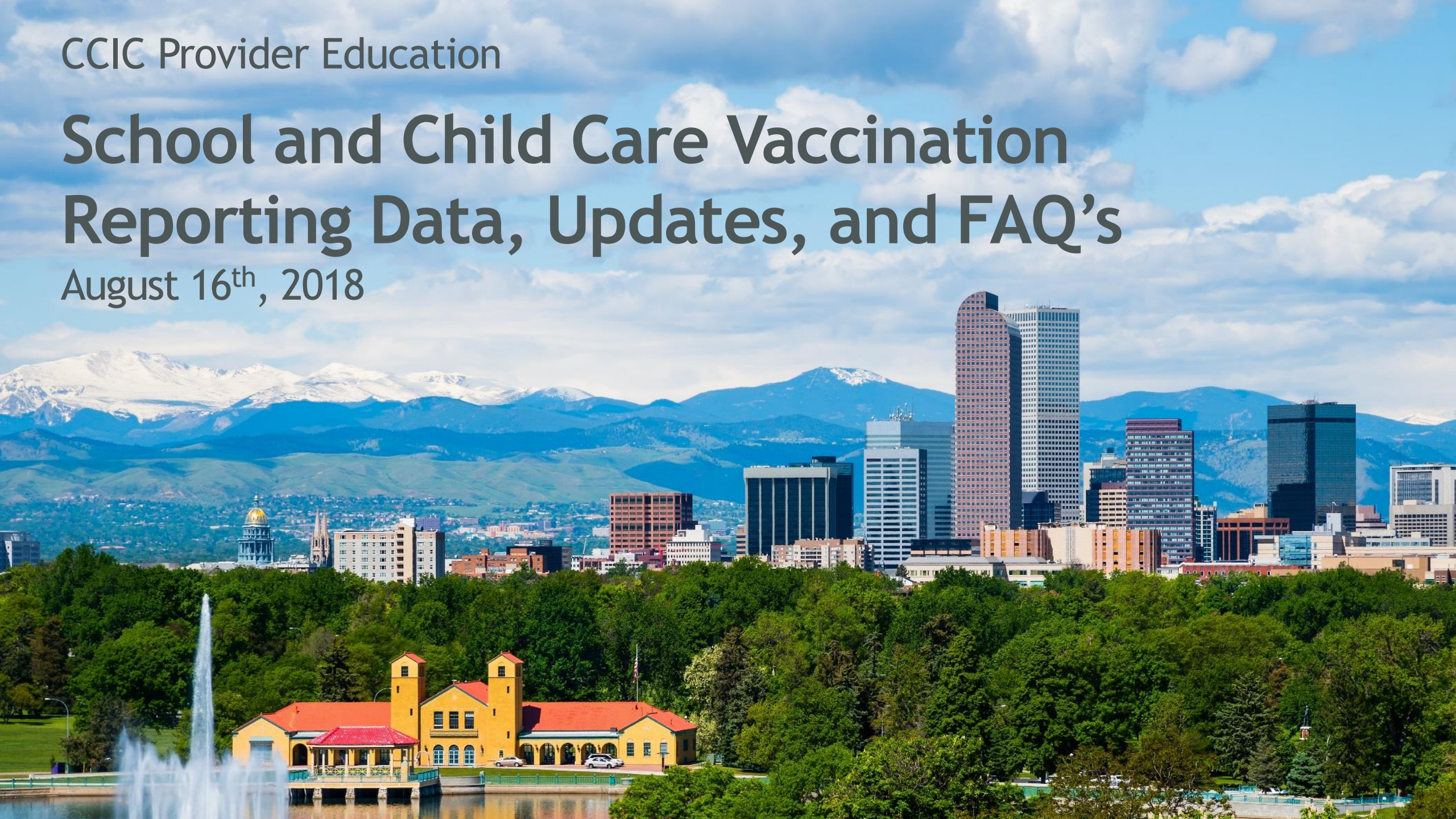


CCIC Provider Education

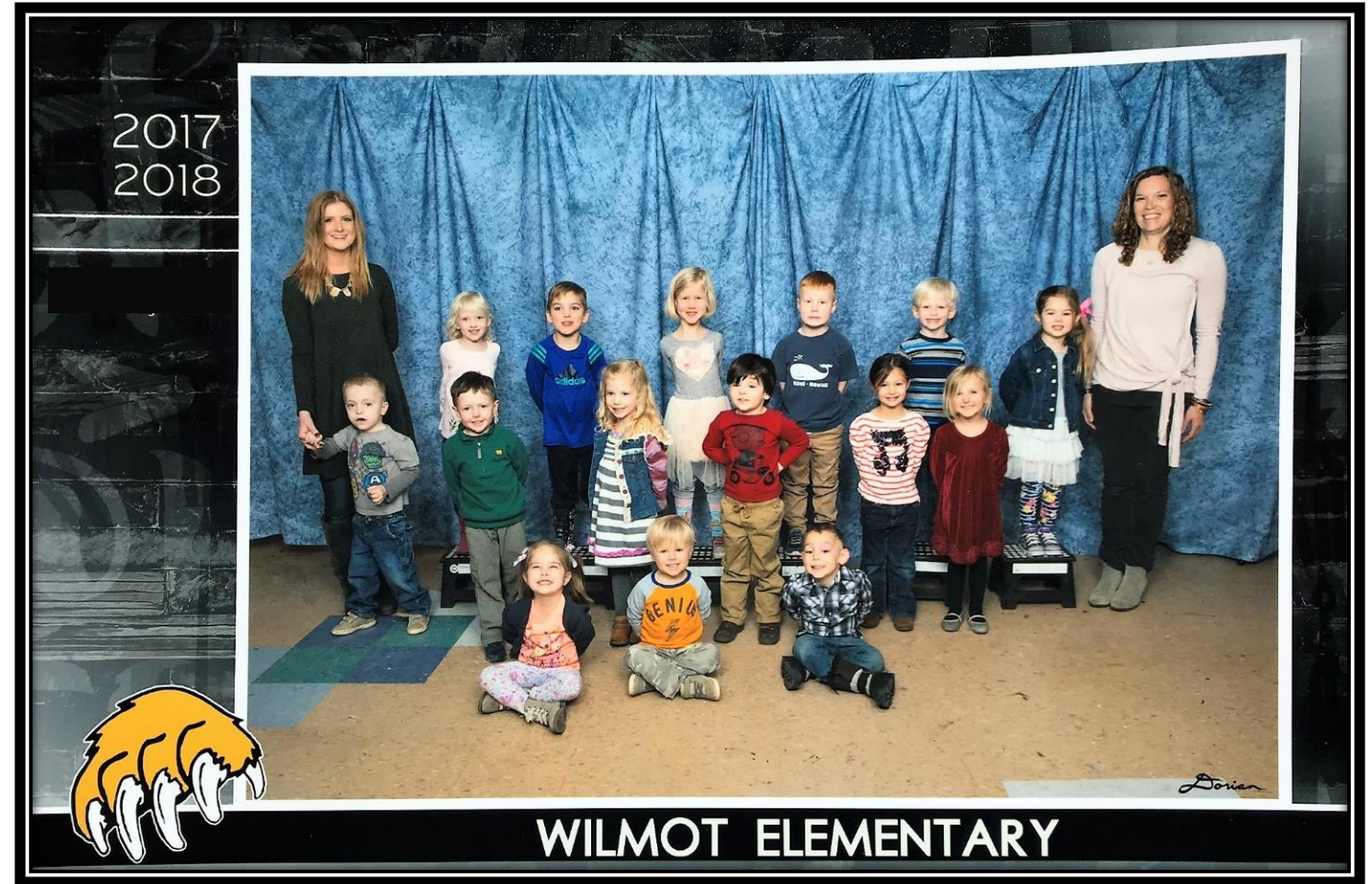
School and Child Care Vaccination Reporting Data, Updates, and FAQ's

August 16th, 2018



What I will cover:

- 1.The school and child care reporting requirement and process.
- 2.Vaccination trends and coverage in Colorado.
- 3.Changes from the first, second, and upcoming reporting period.
- 4.Tips and tricks for successful reporting.



Timeline

- **1885** Massachusetts
- **1922** Supreme Court
- **1978** CDC
- **1989-2000** Colorado Census
- **2002-2007** Colorado Sample
- **2007-2009** Ferpa Barriers
- **2010** FERPA-Compliant methodology
- **2016-2017 (Year 1)**
 - New Legislation. Little time to prepare, quick web-form was created with no validation. Quick data sharing visualization.
- **2017-2018 (Year 2)**
 - New full fledged web application for data collection and three separate visualizations.
- **2018-2019 (Year 3)**
 - District import, tightened validation, new user tools, mobile friendly visualization.

HB-14 1288

- Effective July 1, 2014
 - Required schools and licensed child care facilities to release immunization and exemption rates when requested.
 - Required CDPHE to assist in the collection of immunization data and made us responsible for the analysis and public posting of the data.
 - Authorized the Board of Health to update the frequency of non-medical exemption submissions.

The Requirement (6 CCR 1009-2)

- A Board of Health rule in response to HB-14 1288 that detailed its implementation.
- Effective July 1, 2016.
- “..any child care center, preschool or head start program that is licensed by the Colorado Department of Human Services to provide care to ten or more children and are not exempt from reporting pursuant to Paragraph B of this Section, and; public, private, or parochial schools with kindergarten, elementary or secondary schools through grade twelve, shall send aggregate immunization and exemption data, by antigen, to the Department of Public Health and Environment. “

Who is exempt?

- School-age child care centers
- Family child care homes
- Drop-in centers
- Day treatment centers
- Foster care homes
- Day camps
- Resident camps
- Legal interpretation for on-line schools where students never meet in person
- Public services short-term child care facility
- Guest child care facility
- Ski school

“On December 1, 2016, and each year thereafter...shall send aggregate immunization and exemption data, by antigen, to the Department of Public Health and Environment.”

Required data shall include for all students and kindergarten students:

- Number enrolled
- Number who are up-to-date
- Number who have a medical exemption for all immunizations
- Number who have a medical exemption for one or more but not all immunizations
- Number who have a religious exemption for all immunizations
- Number who have a religious exemption for one or more but not all immunizations
- Number who have a personal belief exemption for all immunizations
- Number who have a personal belief exemption for one or more but not all immunizations
- Number in-process
- Number not up-to-date for immunizations, with no exemption on file, and not in-process
- Number with no immunization records
- ...”the Department of Public Health and Environment shall provide immunization information to the public.”

What is required?

- Child Care/Preschool (# doses is age-dependent)

Age of Child	# of required doses DTaP or DTP Diphtheria, Tetanus and Pertussis	# of required doses IPV Polio	# of required doses MMR Measles, Mumps and Rubella	# of required doses Hib Haemophilus influenzae type b	# of required doses Hep B Hepatitis B	# of required doses Varicella Chickenpox	# of required doses PCV13 Pneumococcal Disease
By 1 mo.	-	-	-	-	1 st	-	-
By 3 mos.	1	1	-	1	2 nd	-	1-
By 5 mos.	2	2	-	2	2 nd	-	2-
By 7 mos.	3	2	-	3/2 nd	2 nd	-	3/2-
By 16 mos.	3	2	1+	4/3/2/1 st	2 nd	1*	4/3/2-
By 19 mos.	4	3	1	4/3/2/1 st	3 rd	1	4/3/2-
By 2 years	4	3	1	4/3/2/1 st	3 rd	1	4/3/2/1-
By K Entry	5/4 ⁺	4/3 ⁺	2		3 rd	2	-

- ♦ Five doses of DTaP vaccines are required at school entry in Colorado unless the 4th dose was given at 48 months of age or older (i.e., on or after the 4th birthday) in which case only 4 doses are required. There must be at least 4 weeks between dose 1 and dose 2, at least 4 weeks between dose 2 and dose 3, at least 4 months between dose 3 and dose 4, and at least 6 months between dose 4 and dose 5. The final dose must be given no sooner than 4 years of age (dose 4 may be given at 12 months of age provided there is at least 4 months between dose 3 and dose 4).
- ♣ Four doses of Polio vaccine are required at school entry in Colorado. There must be at least 4 weeks between dose 1 and dose 2, at least 4 weeks between dose 2 and dose 3, and at least 6 months between dose 3 and dose 4. The final dose must be given no sooner than 4 years of age. A 4th dose is not required if the 3rd dose was administered at age 4 years or older and at least 6 months after the 2nd dose.
- † The first dose of MMR, vaccine given more than 4 days before the 1st birthday is not a valid dose and cannot be accepted. ACIP recommends that the 1st dose of MMR be given between 12 -15 months of age. The student is out of compliance if no record of MMR at 16 months of age.
- ♥ The number of Hib doses required depends on the child's current age and the age when the Hib vaccine was administered. If any dose is given at or over 15 months, the Hib requirement is met. For children who begin the series before 12 months, 3 doses are required, of which at least 1 dose must be administered at, or over, 12 months. If the 1st dose was given at 12 to 14 months, 2 doses are required. If the student's current age is 5 years or older, no new or additional doses are required. The number of doses and the intervals may vary depending on the type of Hib vaccine.
- ✍ The Hep B vaccine is the only immunization that can be given as a birth dose. The 2nd dose of Hep B is to be given at least 4 weeks after the 1st dose; 3rd dose to be given at least 16 weeks (4 months) after 1st dose; and last dose to be given at least 8 weeks after 2nd dose and at (24 weeks) almost 6 months of age or older.
- If a child has had chickenpox disease and it is documented by a health care provider, that child has met the Varicella requirement. Varicella given more than 4 days before the 1st birthday is not a valid dose and cannot be accepted. ACIP recommends 1st dose between 12 - 15 months. The student is out of compliance if the 1st dose is not given at 16 months of age.
- The number of doses of PCV13 depends on the student's current age and the age when the 1st dose was administered. If the 1st dose was administered between 2 to 6 months of age, the student will receive 3 doses (2, 4 & 6 months) at least 4 -8 weeks apart, and booster dose between 12 - 15 months, at least 8 weeks after last dose. If started between 7 to 11 months of age, the student will receive 2 doses, at least 8 weeks apart, and a booster dose between 12 to 15 months of age. If the 1st dose was given between 12 to 23 months of age, 2 doses, at least 8 weeks apart, are required. Any dose given at 24 months through 4 years of age, the PCV vaccine requirement is met. No doses are required once the student turns 5 years of age.

- Kindergarten - 12th Grade

VACCINE	Number of Doses	Grades K-12 (4-18 Years of Age)
	<i>Vaccines must follow MINIMUM INTERVALS & AGES to be valid. A 4 day grace period applies in most situations.</i>	
Diphtheria/Tetanus/ Pertussis (DTaP) <i>Only licensed through 6 yrs of age.</i>	4 to 5	5 DTaP unless dose 4 given is given on or after the 4 th b-day. Final dose of DTaP given no sooner than 4 years of age.
Tetanus/Diphtheria/ Pertussis <i>For students 7 years of age or older who did not have a full series of DTaP.</i>	3 or 4	3 doses tetanus/diphtheria containing vaccines (DTaP, DT, Td, Tdap) is required, or 4 doses required if 1 st dose of DTaP is given before 1 year of age. 1 dose of Tdap given if DTaP series not completed and student is at least 7 yrs of age. Tdap is required at 6th grade entry through 12th grade.
Polio (IPV) <i>With combination of OPV & IPV, need series of 4 doses</i>	3 to 4	4 IPV unless 3 rd dose is given on or after 4 th birthday. Students who were compliant with 3 or 4 doses (4 weeks minimum intervals between doses) prior to August 7, 2009 have met the requirement.
Measles/Mumps/Rubella (MMR) <i>There must be at least a 28 day interval between 2 live vaccines.</i>	2	The 1 st dose is not valid if administered more than 4 days before the 1 st birthday. 2 doses are required for students entering Kindergarten & through 12 th grade.
Varicella (Chickenpox) <i>There must be at least a 28 day interval between 2 live vaccines.</i>	2	The 1 st dose is not valid if administered more than 4 days before the 1 st birthday. 2 doses are required for students entering Kindergarten & through 12 th grade. Note: no vaccine required if there is laboratory documentation of chickenpox disease or a disease screening performed by a health care provider.
Hepatitis B <i>Dosing must follow minimum intervals between doses and last dose must be administered at or over 24 wks of age.</i>	3	The 2 nd dose administered at least 4 weeks after the first dose. The 3 rd dose must be administered at least 16 weeks after the 1 st dose, at least 8 weeks after the 2 nd dose, and the final dose must be administered no sooner than 24 weeks of age. Note: there is a specific 2-dose series is for ages 11-15 years only using adult vaccine.

The Process...

1. Register
2. Activation
3. Report

- Registration involves creating an account and associating that account with the “locations” they will be reporting for. You only need to register once.

📍 Location Access

The screenshot shows the login page for the Colorado Health Informatics system. At the top, there is a header with the CDPHE logo and the text 'COLORADO Health Informatics Department of Public Health & Environment'. Below the header is a navigation bar with links: Home, Request Access, Help Desk, WWC Locations, and How To. The main content area has a section titled 'Access your Programs' with input fields for 'Email' and 'Password', and a 'Log in' button. Below this is a 'Request Access' section with a paragraph of instructions and a 'Request Access' button.

Select from the following types of locations (select all that apply):

- School Districts
- Child Care Facility by County
- Local Public Health Agencies
- Colorado Marriage and Dissolution

📺 Select your Program Access

Select the Programs you would like to access

Click to Add

The screenshot shows a dropdown menu for selecting locations. It contains several items, each with a selection icon (either an 'x' or a circle) and the text 'Click to Add'. The items are: ADAMS COUNTY 14, Adams County Child Care Facilities, ADAMS-ARAPAHOE 28J, Arapahoe County Child Care Facilities, ACADEMY 20 (highlighted in blue), ADAMS 12 FIVE STAR SCHOOLS, AGUILAR REORGANIZED 6, AKRON R-1, Alamosa County Child Care Facilities, Alamosa County Public Health, ALAMOSA RE-11J, ARCHULETA COUNTY 50 JT, Archuleta County Child Care Facilities, and ARICKAREER-2.



Submission Year

2017

2017 Registered Schools/Child Care Facilities

Show 10 entries

Filter:

	School	Location	Type	School	Kinder	Child Care/Pre	Status	Last Updated	By
11808	27J PRESCHOOL @ BRANTNER	Adams County Child Care Facilities	Child Care/Preschool	--	400	200	Submitted	10/10/2017	Jeff Scott
11809	4 SEASONS EARLY LEARNING CENTER	Adams County Child Care Facilities	Child Care/Preschool	--	--	--	Pending	10/06/2017	paul.turtle@state.co.us
11812	6TH AVENUE ELEMENTARY PRESCHOOL	Arapahoe County Child Care Facilities	Child Care/Preschool	--	--	--	Pending	10/06/2017	paul.turtle@state.co.us
11814	A CHILD'S LIFE	Adams County Child Care Facilities	Child Care/Preschool	--	300	200	Submitted	10/11/2017	Jeff Scott
11816	A CHILD'S TOUCH	Adams County Child Care Facilities	Child Care/Preschool	--	--	--	Pending	10/06/2017	paul.turtle@state.co.us
11817	A NEW GENERATION	Adams County Child Care Facilities	Child Care/Preschool	--	--	--	Pending	10/06/2017	paul.turtle@state.co.us
11820	A PLUS LEARNING CENTER DBA IMAGINATION PLUS	Arapahoe County Child Care Facilities	Child Care/Preschool	--	--	--	Pending	10/06/2017	paul.turtle@state.co.us
11826	ABC LEARNING CENTER AND PRESCHOOL	Adams County Child Care Facilities	Child Care/Preschool	--	--	--	Pending	10/06/2017	paul.turtle@state.co.us
11834	ACHIEVE ACADEMY	Adams County Child Care Facilities	Child Care/Preschool	--	--	--	Pending	10/06/2017	paul.turtle@state.co.us
11836	ACTIVE LEARNER'S	Arapahoe County Child Care Facilities	Child Care/Preschool	--	--	--	Pending	10/06/2017	paul.turtle@state.co.us

Showing 1 to 10 of 413 entries

[First](#) [Previous](#) [1](#) [2](#) [3](#) [4](#) [5](#) ... [42](#) [Next](#) [Last](#)

2017 ALSUP ELEMENTARY SCHOOL School and Child Care Immunization Data Reporting

[▶ To get started, enter your enrollment information](#)

School Enrollment - Total: 0

Kindergarten	<input type="text"/>	5th Grade	<input type="text"/>	10th Grade	<input type="text"/>
1st Grade	<input type="text"/>	6th Grade	<input type="text"/>	11th Grade	<input type="text"/>
2nd Grade	<input type="text"/>	7th Grade	<input type="text"/>	12th Grade	<input type="text"/>
3rd Grade	<input type="text"/>	8th Grade	<input type="text"/>		
4th Grade	<input type="text"/>	9th Grade	<input type="text"/>		

[▶ NEXT](#)

School and Child Care Vaccination Reporting Data, Updates, and FAQs

**COLORADO**
Department of Public
Health & Environment

- *Pending* for schools you have not started.
- *In Progress* for schools that you have begun but not finished.
- *Submitted* for schools that you have completed.

2017 ALSUP ELEMENTARY SCHOOL School and Child Care Immunization Data Reporting

❗ The Vaccine Summary Information you have reported DOES NOT MATCH the Enrollment Information you entered. Please ADJUST/ADD your vaccine information below.

Vaccine Summary Information

Click this box to begin reporting!

Pending School 10/11/2017 10:31:26 AM CDPHE Test

School Summary Information		School Enrollment 60			School Vaccine Information			Kindergarten Summary Information		Kindergarten Enrollment 10			Kindergarten Vaccine Information		
Compliant - N/A	Not Compliant - N/A				HepB Total: N/A	Polio Total: N/A	Varicella Total: N/A	Compliant - N/A	Not Compliant - N/A	HepB Total: N/A	Polio Total: N/A	Varicella Total: N/A	DTaP Total: N/A	MMR Total: N/A	
					DTaP Total: N/A	MMR Total: N/A									

School Enrollment - Total: 60

Kindergarten	<input type="text" value="10"/>	5th Grade	<input type="text" value="10"/>	10th Grade	<input type="text"/>
1st Grade	<input type="text" value="10"/>	6th Grade	<input type="text"/>	11th Grade	<input type="text"/>
2nd Grade	<input type="text" value="10"/>	7th Grade	<input type="text"/>	12th Grade	<input type="text"/>
3rd Grade	<input type="text" value="10"/>	8th Grade	<input type="text"/>		
4th Grade	<input type="text" value="10"/>	9th Grade	<input type="text"/>		

SAVE

Reporting

Child Care or Preschool

2017 ABC LEARNING CENTER AND PRESCHOOL School and Child Care Immunization Data Reporting

To get started, enter your enrollment information

Kindergarten Students

Check this box if:

- Your oldest full-time students are kindergartners

DO NOT check this box if:

- All your students are younger than kindergarten
- Your child care/preschool enrolls kindergarten (and/or older) students but they attend less than full-time (i.e. before/after care)

Child Care/Preschool Enrollment - Total: 0

0 mths - Preschool

2017 ABC LEARNING CENTER AND PRESCHOOL School and Child Care Immunization Data Reporting

Child Care/Preschool Overall Immunization Status

Category	Number of Students in Category
Compliant	
Not Compliant	

0

20
Total Child Care/Preschool Enrollment

Child Care/Preschool Exemptions from All Vaccines (Totals MUST NOT exceed Total Enrollment)

Category	Number of Students in Category
Medical exemption for all vaccines	
Religious exemption for all vaccines	
Personal exemption for all vaccines	

Child Care/Preschool Vaccine-Specific Status (All rows MUST EQUAL Total Enrollment)

Vaccine	Up-To-Date	COMPLIANT				NOT COMPLIANT		Total
		Medical Exemption	Religious Exemption	Personal Exemption	In Process	No Record	Incomplete Record	
HepB								0
DTaP								0
Polio								0
MMR								0
Varicella								0
HB								0
PCV13								0

20
Total Child Care/Preschool Enrollment

School

2017 ALSUP ELEMENTARY SCHOOL School and Child Care Immunization Data Reporting

To get started, enter your enrollment information

School Enrollment - Total: 0

Kindergarten		5th Grade		10th Grade	
1st Grade		6th Grade		11th Grade	
2nd Grade		7th Grade		12th Grade	
3rd Grade		8th Grade			
4th Grade		9th Grade			

2017 ALSUP ELEMENTARY SCHOOL School and Child Care Immunization Data Reporting

▶ NEXT

School Overall Immunization Status

Category	Number of Students in Category
Compliant	
Not Compliant	

0

60
Total School Enrollment

School Exemptions from All Vaccines (Totals MUST NOT exceed Total Enrollment)

Category	Number of Students in Category
Medical exemption for all vaccines	
Religious exemption for all vaccines	
Personal exemption for all vaccines	

School Vaccine-Specific Status (All rows MUST EQUAL Total Enrollment)

Vaccine	Up-To-Date	COMPLIANT				NOT COMPLIANT		Total
		Medical Exemption	Religious Exemption	Personal Exemption	In Process	No Record	Incomplete Record	
HepB								0
DTaP								0
Polio								0
MMR								0
Varicella								0

60
Total School Enrollment

2017 ALSUP ELEMENTARY SCHOOL School and Child Care Immunization Data Reporting

School Overall Immunization Status

Category

Number of Students in Category

Compliant

Not Compliant

0

60

Total School Enrollment

School Exemptions from All Vaccines (Totals MUST NOT exceed Total Enrollment)

Category

Number of Students in Category

Medical exemption for all vaccines

Religious exemption for all vaccines

Personal exemption for all vaccines

School Vaccine-Specific Status (All rows MUST EQUAL Total Enrollment)

Vaccine	COMPLIANT					NOT COMPLIANT		Total
	Up-To-Date	Medical Exemption	Religious Exemption	Personal Exemption	In Process	No Record	Incomplete Record	
HepB								0
DTaP								0
Polio								0
MMR								0
Varicella								0

60

Total School Enrollment

Data Quality...

- We ask for two types of information from reporters.
 1. Individual antigen
 2. Across all antigens or “school level”
- Reporters have far less difficulty with individual antigen reporting.
 - Able to validate data against enrollment
 - Passes the “looks reasonable” test
 - Few if any questions...
- Reporters have increased difficulty with “school level” reporting.
 - Limited validation options
 - Frequently does not “add up”
 - Receive questions frequently
 - More complex
- Changed question of up-to-date to compliance at school level to lessen confusion.
- Intent to one day change it back...

Prior to reporting...

Visit our School and child care immunization data reporting website!

We have videos and step-by-step PDFs of registration, child care reporting, and school reporting.

Worksheets for both child care and schools.

Guidance on how to create an immunization rate report from CIIS for your reporting.

Print out our required school/child care vaccination charts!

All kids who are not up-to-date, review their record against the above charts. Many school data systems are not specific to Colorado!

Reporting should not bring anyone to tears. Nor is it the end of the world if you get stuck, we will help you.

School nurses and child care providers are heroes!

Common questions and Tips

Questions:

1. I can't find my facility.
2. I can't submit my report.
3. Can I get an extension?
4. How can I change my submission?
5. Where do my preschool kids go?
6. I registered, was approved, and can't figure out where to enter my data?

Tips:

1. Facility selection does change this year. Just start typing the name of your facility first. If that fails start typing the address. You don't have to scroll through the list. Name and address are searchable just by typing any portion of them.
2. If there is red on your screen something is wrong, usually validation ensuring every kid (enrollment) is matched. The system also doesn't want a zero: if no kids have an exemption, leave it blank!
3. Each year of this process has been completely new, often with us developing the process right up until the survey opens. This will be our first year where we are not recreating the wheel. We are striving to meet the dates outlined in the legislation. (a roundabout "no"). Please try to start ahead of time! If an extension is needed it will be applied universally.
4. Log back in and "unlock" your survey.
5. Preschool kids are treated as a child care and must be reported in their own child care site, not in your "school".
6. Where it says "vaccine summary information", there is a box beneath it with your enrollment information. Click that box!
7. Print out one of our paper worksheets and complete it without any technological interference or distraction. Then log in and enter.
8. Register immediately if you didn't last year. Even if you did, once the survey opens try to log in!

Data exchange

2016-2017 Piloted two districts sending us extracts from their school data system (infinite campus or power school).

Sent us de-identified, FERPA-compliant individual level data according to a specification I created.

We were able to process and calculate rates for all schools in the district and populate the application as if each school completed them manually.

2018-2019 Upload functionality is being built to expand this pilot.

Clear benefits for everyone involved

Quick and easy for entire districts to report

Takes pressure off nurses and school staff

Ensures accurate rate calculations

“School level” across all vaccines per student is no longer a barrier

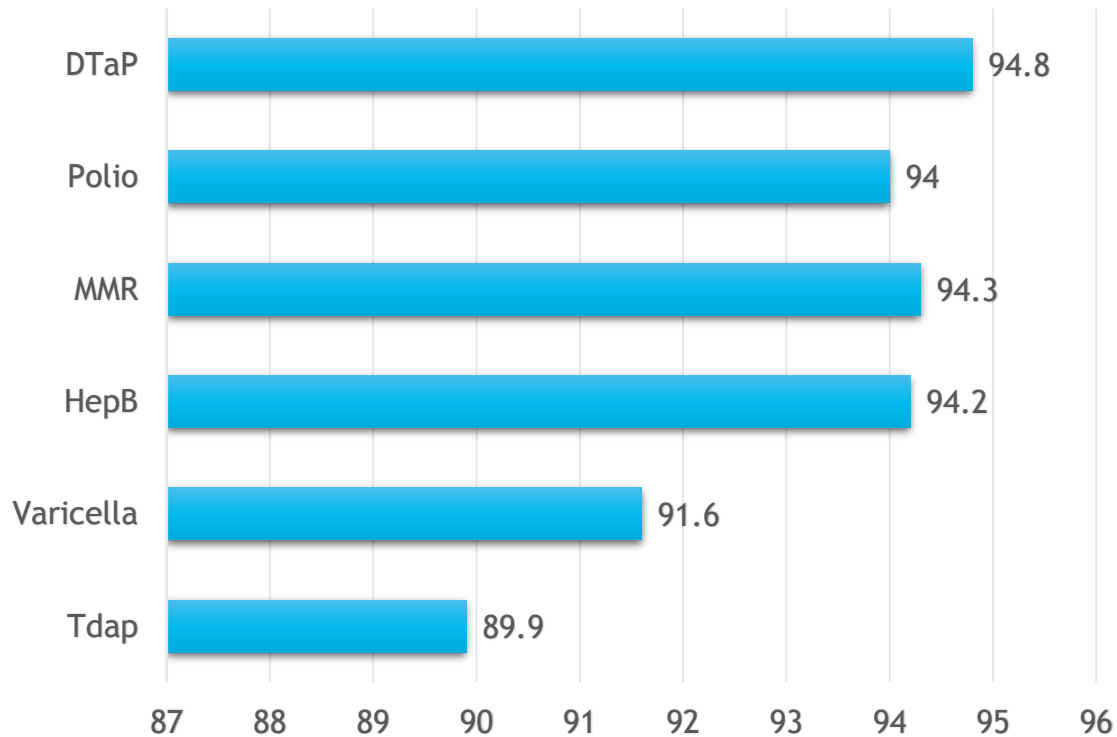
No longer "self-reported" data

Allows CDPHE to automate more of the data collection

The data...

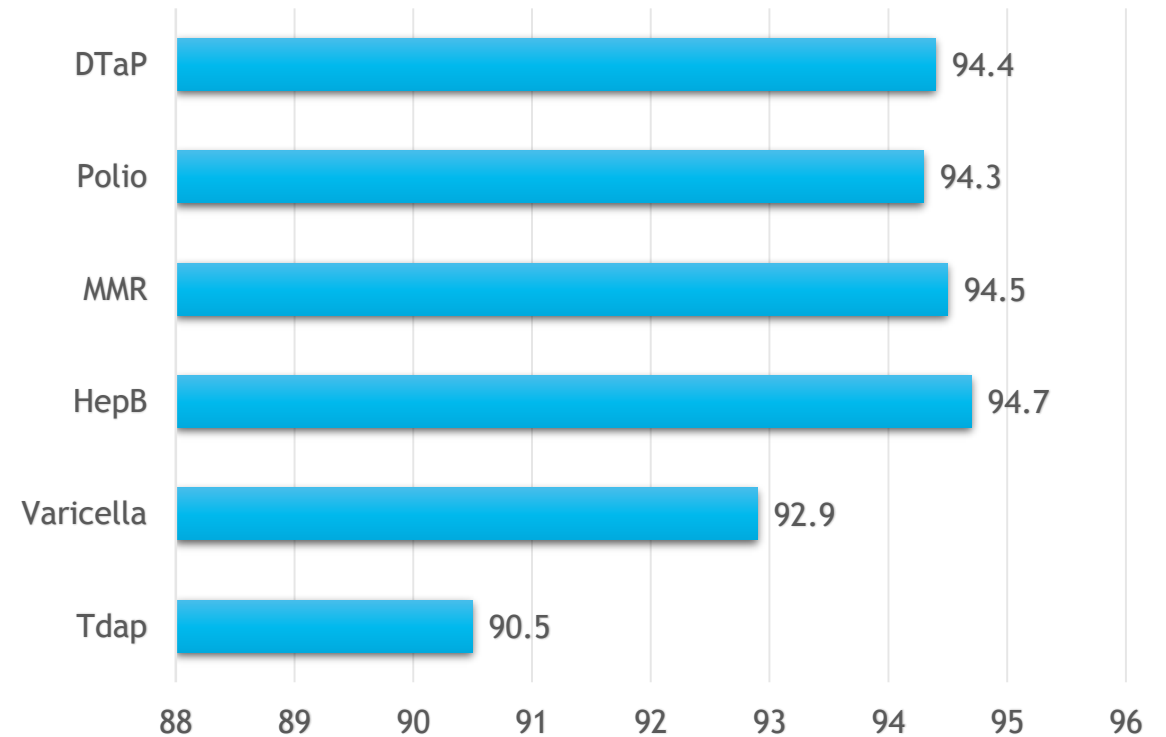
2016-2017 Schools

% Up-To-Date



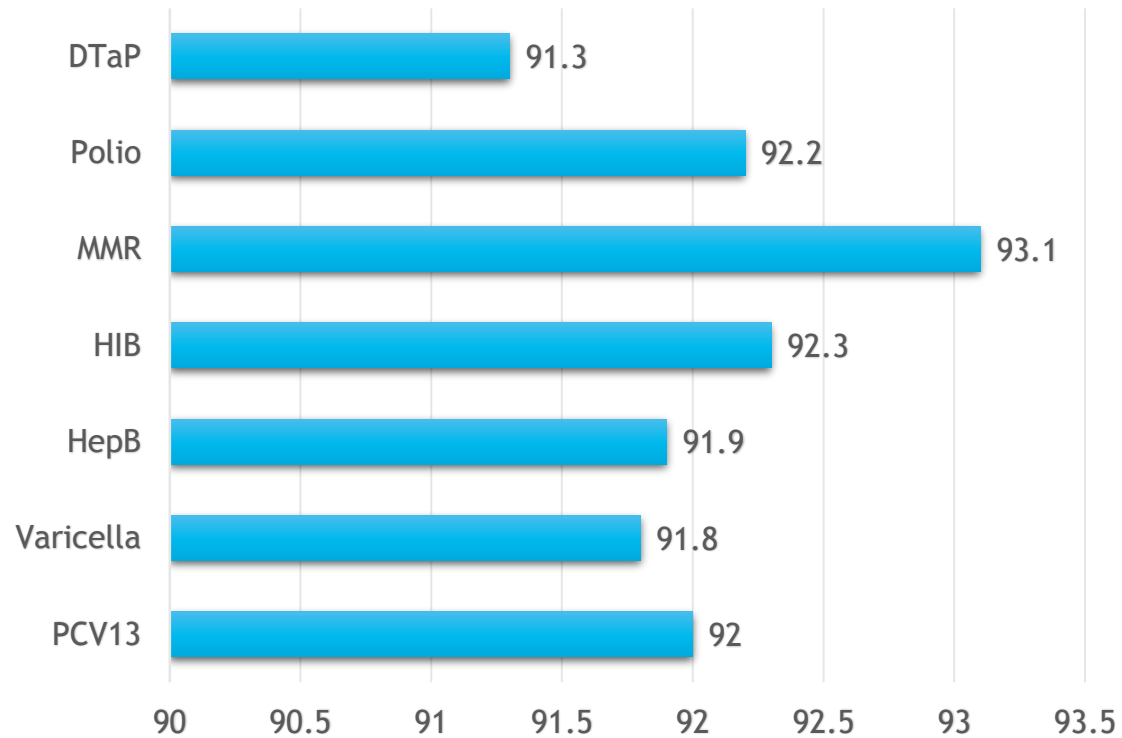
2017-2018 Schools

% Up-To-Date



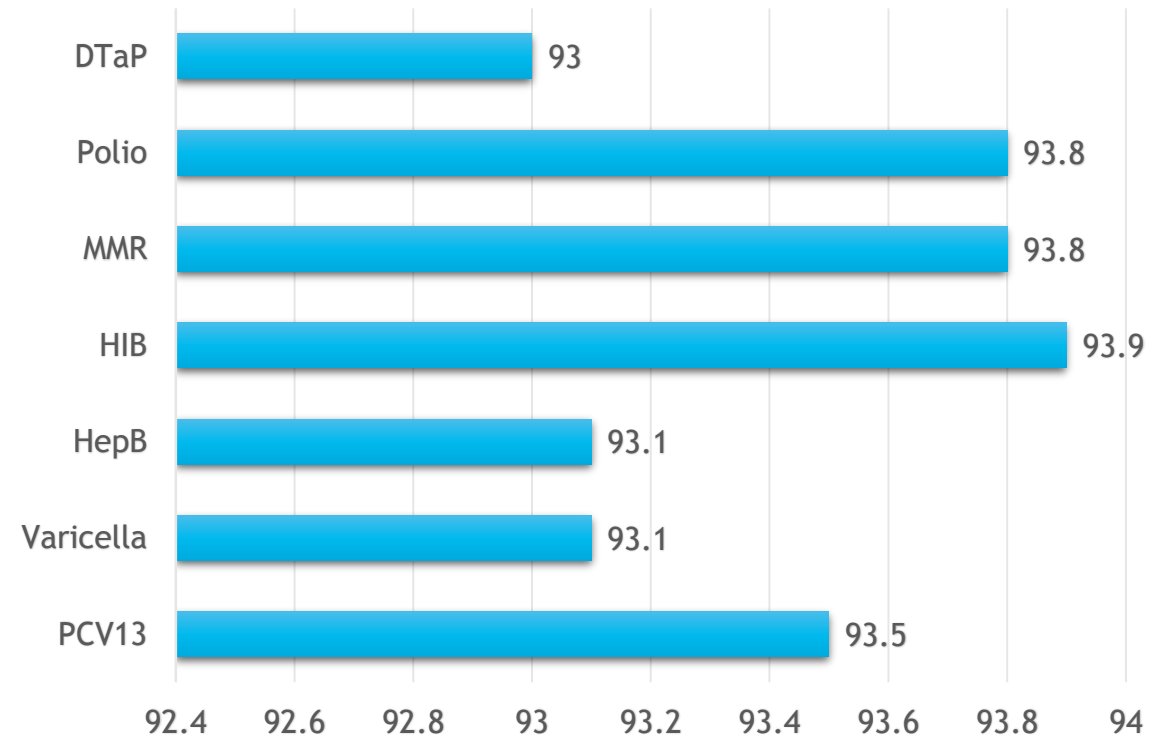
2016-2017 Child Cares

% Up-To-Date

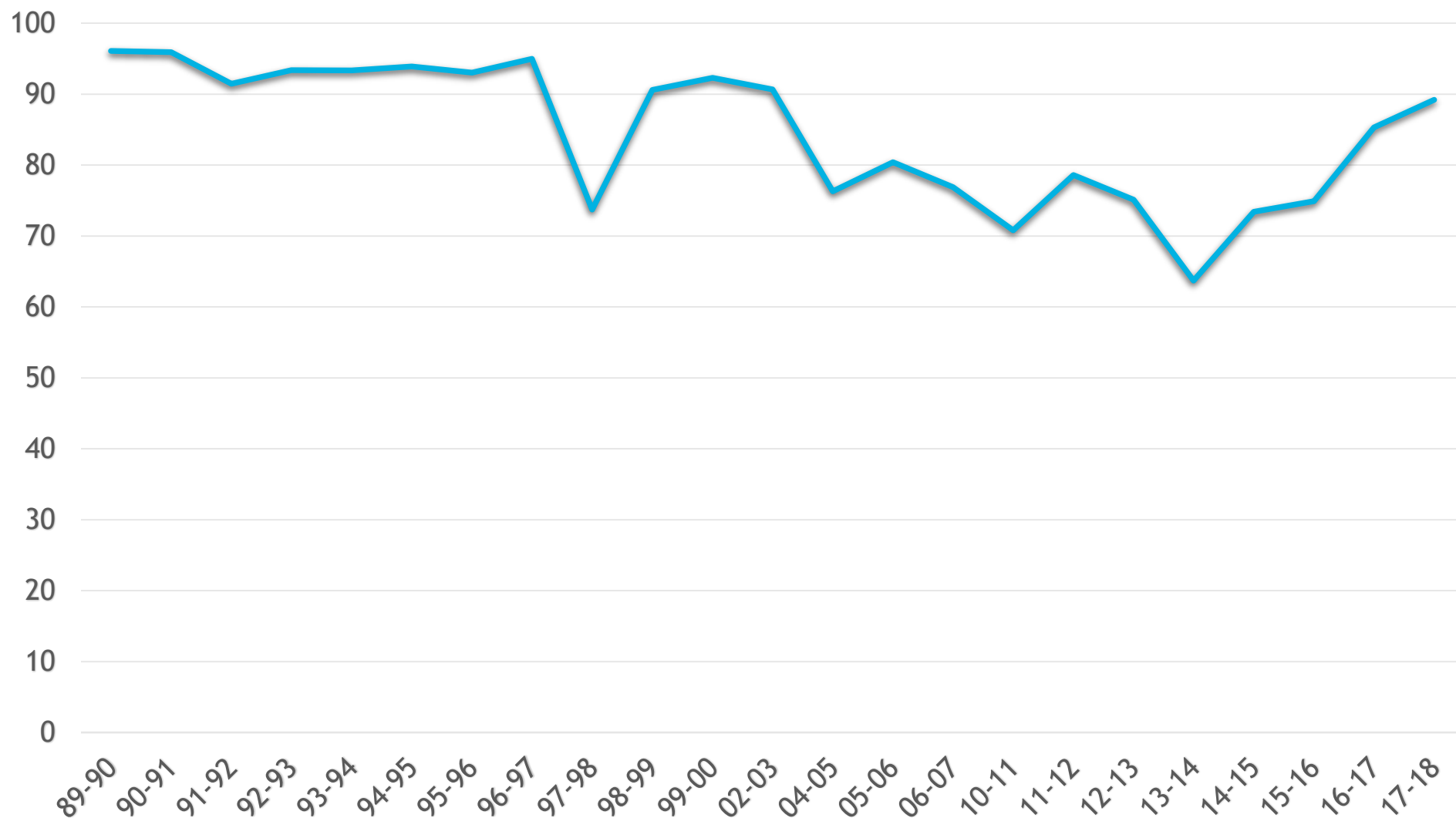


2017-2018 Child Cares

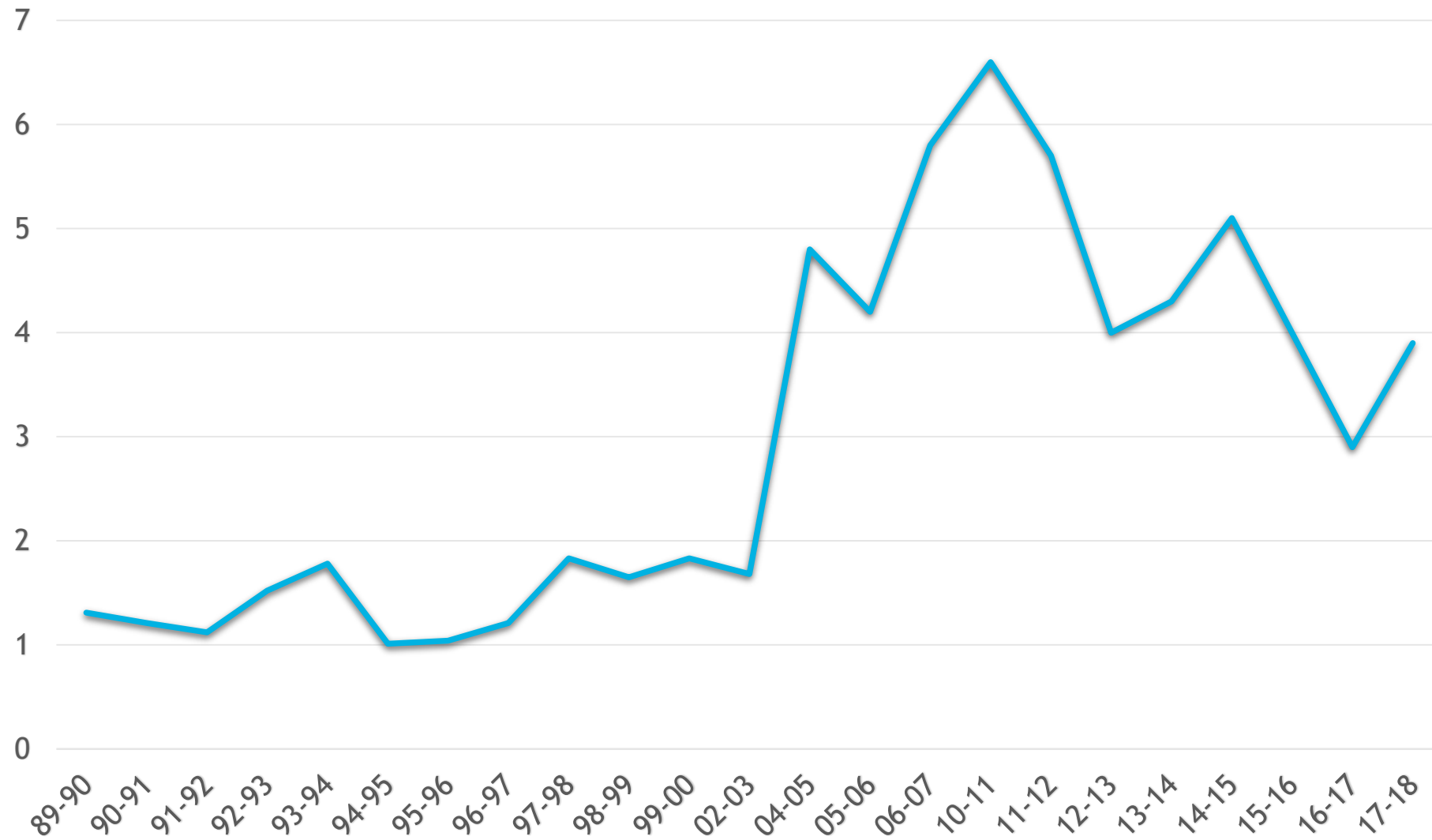
% Up-To-Date



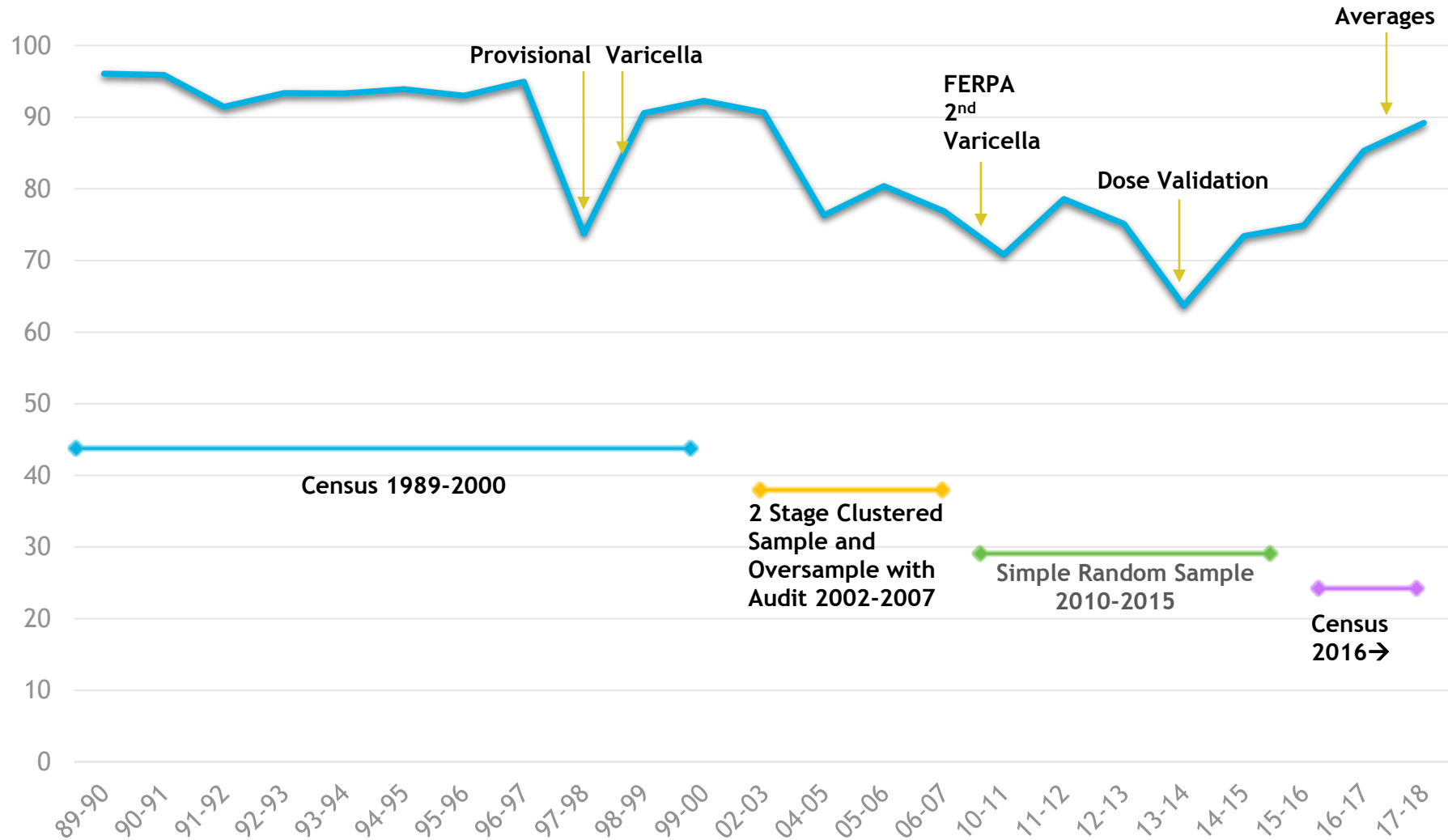
% Kindergartners Up-To-Date



% Kindergartners with Personal Exemption



% Kindergartners Up-To-Date



Sharing of data...

[For parents/guardians](#)

[For community partners](#)

[Custom reports and data download](#)

THANK YOU!

Feel free to reach out to me at

paul.gillenwater@state.co.us

or

cdphe_informaticsimmunization@state.co.us

303-692-2759